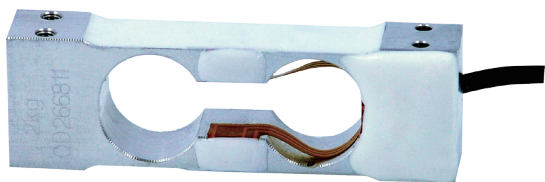


L6J1



- Aluminium-Alloy IP65 single point load cell
- Colourless anodized
- Suitable for counting scales, balances, pricing scales, etc.
- Recommended platform size: 200 x 200 mm

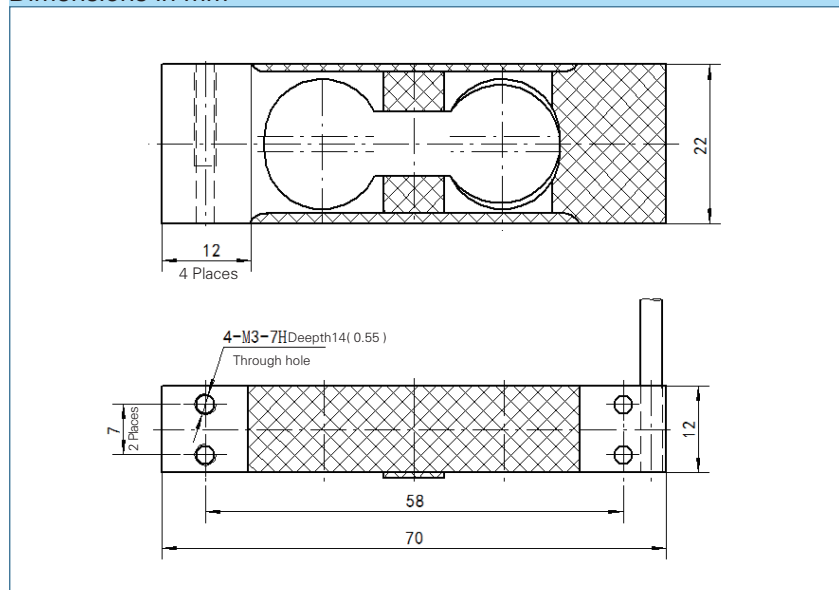
Available models

Capacity	Accuracy	Full article description
0.3 kg	C3D	L6J1-C3D-0.3kg-0.45B
0.4 kg	C3D	L6J1-C3D-0.4kg-0.45B
0.5 kg	C3D	L6J1-C3D-0.5kg-0.45B
0.6 kg	C3D	L6J1-C3D-0.6kg-0.45B
1 kg	C3D	L6J1-C3D-1kg-0.45B
3 kg	C3D	L6J1-C3D-3kg-0.45B

Specification

Accuracy class		C3D
Output sensitivity (= FS)	mV/V	1.0 ± 0.1
Maximum capacity (E _{max})	kg	0.3, 0.4, 0.5, 0.6, 1, 3
Maximum number of load cell intervals (nLC)		2500
Ratio of minimum LC verification interval $Y = E_{max} / V_{min}$		5000
Combined error	%FS	± 0.0280
Minimum dead load	of E _{max}	0%
Safe overload	of E _{max}	120 %
Ultimate overload	of E _{max}	150 %
Zero balance	%FS	± 2.0
Excitation, recommended voltage	V	5 ~ 12(DC)
Excitation maximum	V	18(DC)
Input resistance	Ω	406 ± 6
Output resistance	Ω	350 ± 3
Insulation resistance	MΩ	≥ 5000 (50VDC)
Compensated temperature	°C	-10 ~ +40
Operating temperature	°C	-35 ~ +65
Storage temperature	°C	-40 ~ +70
Element material		Aluminium
Recommended torque on fixation	N.m	M3: 1.5
Ingress protection (according to EN 60529)		IP65

Dimensions in mm



Wiring

